

Master of PUBLIC HEALTH

Concentration in
Social Epidemiology



15-MONTH PROGRAM. 8-WEEK TERMS. 100% ONLINE.

Help to Grow Community Health Where People Live, Work and Play.

NCWU's Master of Public Health (MPH) program, with a concentration in **Social Epidemiology**, examines how social determinants of health—such as our living, working, and recreational environments, access to resources, and the social and systemic conditions we face—affect a wide range of health outcomes. It aims to identify and understand how health inequities influence community and population health trends. Students will be well-equipped for careers focused on understanding and transforming the links between socio-structural conditions and health equity, addressing health disparities, and applying interdisciplinary strategies to enhance community health.



CONVENIENT

Take classes from anywhere! Balance work, home and school with this 100% online, accelerated 8-week term program.



PRACTICAL

Students gain practical hands-on experience and obtain health-related national certifications as part of their MPH program at NCWU.



AFFORDABLE

NC Wesleyan's graduate tuition rates are extremely competitive compared to other graduate schools in the U.S.



EXPERIENCED

Our faculty has real-world professional experience to ensure you are challenged and supported through practical coursework.

LEARNING OUTCOMES:

Graduate students pursuing the MPH in Social Epidemiology will learn how to apply social epidemiological frameworks and analytic strategies to improve community and population health using their understanding of:

- The connections among social-environmental exposures and patterns of health and illness
- The links between social-environmental exposure and experiences and health behaviors
- The impact of the social determinants on health and disease prevention
- The ethics and roles of health equity in ensuring positive health statuses and outcomes amongst diverse individuals, groups, communities, and populations
- Applying social epidemiological approaches in research and assessment
- Narrative strategies that explore, explain, and apply social epidemiological concepts and findings in community health promotion

CAREER AREAS:

- Health Policy Analyst
- Public Health Epidemiologist
- Research Scientist
- Project Director
- Disease Intervention Coordinator
- Program Assessment and Evaluation Specialist
- Community health worker/ community advocate

ADMISSIONS CRITERIA:

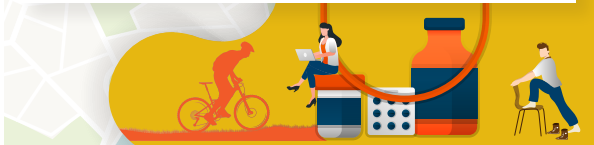
- An undergraduate degree*
- Resume with two references (must be able to provide reference letters upon request)
- Complete a statement of purpose
- No GRE required
- Minimum undergraduate GPA of 2.7

**No prerequisite. A strong interest in, or background/ education in public health or a related field is encouraged*

Note: Graduate school applicants with a cumulative GPA of 2.5-2.7 may still be considered based upon other factors submitted in the application.



Apply Today!
Scan the QR code to fill out your **FREE** application.



We offer an **accelerated MPH (15-month program)** and an **extended MPH program (27-month program)**. The extended MPH program is designed to allow students to take one course per 8-week term, making it more flexible for working students.

MASTER OF PUBLIC HEALTH CURRICULUM PLAN

MAJOR REQUIREMENTS	
Courses	Credits
PBH 500 - Foundations in Public Health	3
PBH 510 - Quantitative & Qualitative Methods in Public Health	3
PBH 520 - Epidemiology	3
PBH 525 - Public Health Policy, Management and Leadership	3
PBH 530 - Program Planning & Implementation	3
PBH 535 - Program Evaluation & Measurement	3
PBH 540 - Healthcare Systems & Public Health	2

SOCIAL EPIDEMIOLOGY CONCENTRATION	
Courses	Credits
PBH 501 - Introduction to Social Epidemiology	3
PBH 515 - Physical Activity and Behavior	3
PBH 601 - Storying, Interpreting, and Constructing: Using Qualitative Inquiry	3
PBH 608 - Space, Place, and Health	3
PBH 612 - Hunger and Food (in)Security	3

Experiential & Integrated Learning Courses: Public Health Integrative Seminar, Internship** & Professional Preparation (7 credits)

Total Program Credit Hours: 42

NOTE:

Fall and Spring (year 1) MPH program classes can be taken by senior-level undergraduate students who have been accepted into the integrated 4+1 MPH program option.

***Accelerated MPH students will be assigned to take PBH 694: Public Health Internship during either Summer (year 1) or Fall (year 2) of their MPH program. Semester assignment for PBH 694 will be determined by the student's faculty advisor, in consultation with the MPH program director.*

Integrated 4+1 MPH Option:

The Integrated 4+1 MPH allows undergraduate students from NCWU to graduate with both a bachelor's degree and a Master's in Public Health degree in five years (vs. the typical six years). This option is intended for highly motivated undergraduate students interested in pursuing an MPH degree after their undergraduate program. Students also save tuition dollars because they pay the undergraduate tuition rate for the first year of the MPH program.



Scan QR code to learn more.

For more information, contact:

Office of Adult & Professional Studies
877.867.6292
adultstudies@ncwu.edu

Shannon Crowley, Ph.D.
Associate Professor of Public Health, MPH Program Director,
Program Coordinator for Public Health
252.985.5243
scrowley@ncwu.edu