

## **North Carolina Wesleyan College Infectious Disease Control/Response Viral Infection Response Plan for COVID-19**

Infectious disease emergencies are circumstances caused by biological agents, including organisms such as bacteria, viruses, or toxins with the potential for significant illness or death in the population. The Infectious Disease Response Plan may be used in situations that include naturally occurring outbreaks (e.g., measles, mumps, meningococcal disease), emerging infectious diseases (e.g., COVID-19, pandemic influenza) and bioterrorism.

### **Infectious Disease Response and Organization**

The Infectious Disease Response Team (IDRT) operates under the authority of the President of the College. Their purpose is to guide the College's implementation of the infectious disease control plan in an effort to minimize disruption to student services while ensuring the safety of the entire college community. The President, with counsel from the Infectious Disease Response Team, will advance the stage of response as necessary according to the response tiers below.

#### **Viral Infection Response Team for COVID-19**

Jessica Brys-Wilson, PA-C, Chair, *Director Health Services*

Wayne Sears, Vice Chair, *Director of Campus Safety*

Dr. Molly Wyatt *Interim Vice President of Academic Affairs and Dean of Students*

Jessie Langley *Associate Dean of Students for Campus Life*

Steve Burrell *Interim Director of Residence Life*

David Fryar *Director of Facilities*

### **Response Tiers**

#### **Tier I**

No known public health issues: Under this tier, viral infections including the flu, meningitis, and other known low risk infections may occur at rates not considered "a public health issue." These are treated and monitored on a case-by-case basis under the suggested protocol by health care professionals.

#### **Tier II**

Minimal public health issue: Infectious disease outbreak with minimal disruptions to services and classes with a low number of cases; or known public health risk warnings are imminent due to outbreaks in other areas.

#### **Actions:**

- Acquiring prevention supplies with input from Health Services and Facilities Administration.
- Work with campus contractors (food services and security) to prepare for possible advanced tiers.
- Developing protocols for exposure control and exposure monitoring.
  - Symptom Self-Report Protocol (see Figure 1 below)
  - Travel Self-Report Protocol ([link to travel self-report form](#))
- Educate all campus constituencies on prevention and treatment methods of disease.
  - Disseminate messaging through appropriate channels: email notification, flyers for

campus, and website.

- Development of contingency plans for payroll/HR, academic services, health services, security, food services et al.

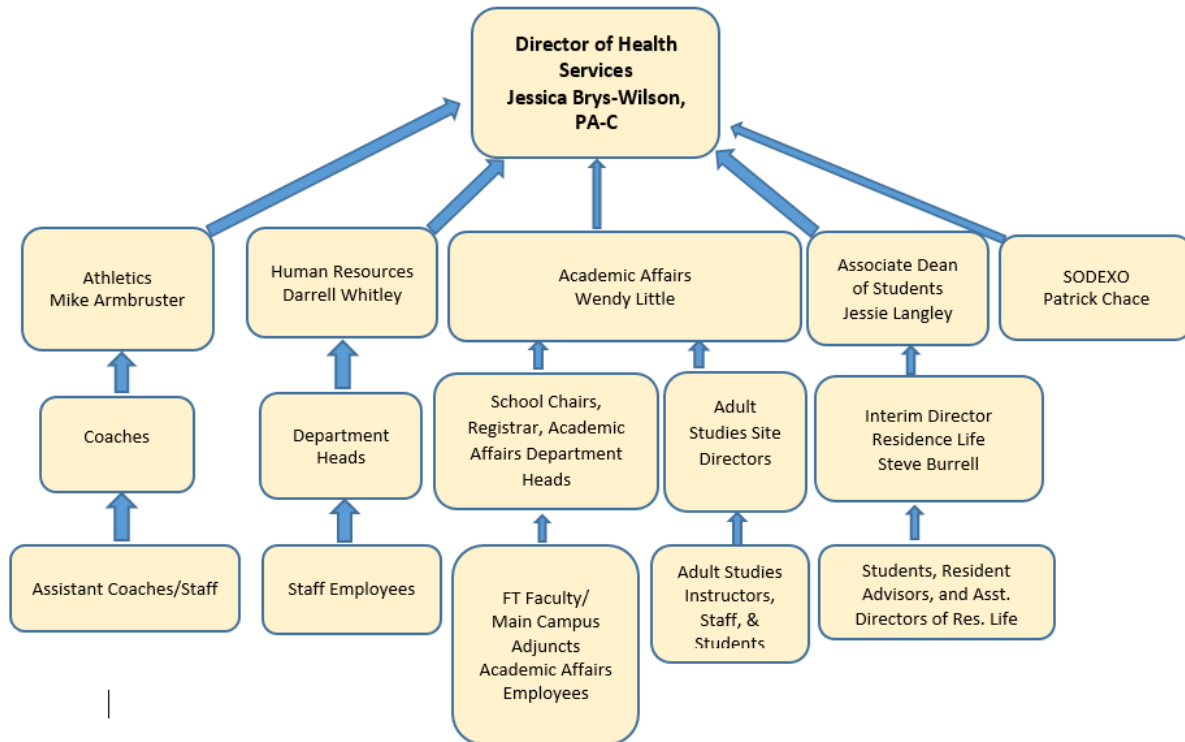


Figure 1. Symptom Self-Report Reporting Structure

### Tier III

Confirmed cases of infectious diseases in the immediate community or within the College.

Actions:

- Health Center launches Exposure Control Plan:
  - Identification/Containment/Control: Employees who are sick should stay away from work and seek diagnosis/treatment through their medical healthcare provider. Students who are sick should report their conditions to the Student Health Center for diagnosis/evaluation. **Any immediately threatening health condition (like chest pains, acutely severe headaches, etc.), should result in a call to 911 for 1st aid assessment and potential ambulatory transportation to a local hospital.**
  - Outbreaks of acutely infectious/communicable diseases will be assessed by the Director of the Health Center, in accordance with local, state, and federal health guidelines; and under direction of the contracted physician. While specific actions/responses the

College will take once such a disease has been identified tend to be disease-specific, three different containment/control strategies will be followed:

- *Actions involving sick/symptomatic persons include:* treatment, isolation, ambulatory transportation to a local hospital, diagnostic testing and disease reporting through public health authorities/channels.
  - *Actions involving those who have been in contact with sick/symptomatic persons include—*medical monitoring/counseling, and treatment/isolation/ambulatory transportation as needed, diagnostic testing by health department or hospital.
  - *Actions involving the greater College community, (those not in direct contact with sick/symptomatic persons) include—*information sharing as to the nature of the disease outbreak and specific recommended preventative actions, medical monitoring/counseling, additional cleaning and disinfection of public spaces, and others as needed.
- Outbreaks of less acute infectious/communicable diseases (like Pandemic Influenza) will principally be managed in accordance with local, state and federal health guidelines. This may result in the temporary suspension of all College functions, buildings and facilities.
  - Building evacuations (as traditionally defined) would occur following an outbreak of infectious/communicable diseases, it is critical for all employees/students to stay informed as an emergency unfolds. College officials will disseminate critical information as it becomes available to safeguard the greater College community.

#### Considerations:

- Isolation/Quarantine of acutely sick persons.
  - Resident Students
    - COVID-19 quarantine area will be at the Wesleyan Inn.
    - Flu quarantine area – available single rooms.
  - Employees are urged to stay home if sick.
  - Cancel all meetings/events over 25 persons.
  - Volunteers wipe down problematic surfaces hourly with gloves and disinfectant.
- Contingency plans for payroll, HR, Registrar's Office, Facilities, Security, Health Center and other essential services put into operational phase.

#### Tier IV

Multiple confirmed cases in the immediate surrounding community or on campus.

#### Actions:

- All non-essential employees stay home/work remotely as possible.
- All seated/hybrid courses moved 100% online.
- Students may leave campus but should not travel on mass transit.
- Student Isolation turns to quarantine – under direction of Nash County Health Dept.
- Close library

- Meals disseminated from Sodexo to rooms of quarantine cases. No gatherings or meetings.

#### **Tier V**

College officially closes. This may be per state or federal directive.

#### Actions:

- College is disinfected and sanitized by facilities on continuing basis.
- All non-essential employees encouraged to work from home.
- Contingency plans should be exercised.

### **Resources**

Centers for Disease Control COVID-19 Website

<https://www.cdc.gov/coronavirus/2019-ncov/index.html>

Colleges and Universities Pandemic Influenza Check List, Coronavirus Disease 2019 (COVID-19): Interim Guidance for Administrators of US Institutions of Higher Education (IHE) to Plan, Prepare, and Respond to Coronavirus Disease 2019 (COVID-19).

[https://www.cdc.gov/flu/pandemic-resources/pdf/colleges\\_universities.pdf](https://www.cdc.gov/flu/pandemic-resources/pdf/colleges_universities.pdf)

Interim Guidance for Businesses and Employers to Plan and Respond to Coronavirus Disease 2019 (COVID-19), February 2020: Stigma Related to COVID-19, What to Do If You Are Sick With Coronavirus Disease 2019 (COVID-19) <https://www.cdc.gov/coronavirus/2019-ncov/community/guidance-business-response.html>

Steps Healthcare Facilities Can Take Now to Prepare for Coronavirus Disease 2019 (COVID-19).

<https://www.cdc.gov/coronavirus/2019-ncov/healthcare-facilities/steps-to-prepare.html>